

# TOTAL TANK

## EMULSION STORAGE SYSTEMS

*The Key to an Efficient  
Road Repair System*

**Save Labor & Material  
Cost - Emulsion Mixture  
is Always Ready for your  
Road Repair Crew**

Finally, there is an Automated Emulsion Storage System that is specially designed for proper storage and handling of asphalt emulsions. The **Total Tank Emulsion Storage System** by Warren Power Attachments gently heats and agitates emulsions to preserve their performance and ease of application.



**Automated Agitation**

**Electric Heat**

**Gravity Feed System**

**Heated Load Valves**

**3000 to 10,000 Gallon**



**Portable**

**Electric Heat**

**1000 Gallon**

- Agitator supported by 2" tapered roller bearings
- Tank roof coated with rubberized sealant
- Entire tank insulated with 3" foil backed high-density insulation
- Single weatherproof NEMA 3r enclosure protects electrical system

# Automated Emulsion Storage System

## Standard System Features

- **Timed Agitator** - supported by 2" tapered roller bearings
- **Emulsion Temperature Gauge**
- **Emulsion Quantity Measuring System**
- **Blanket Heaters** - six 1000w blanket heaters (220v) with thermostatic control
- **Enclosed Electrical Components** - protected within a single weatherproof NEMA 3R enclosure
- **Three Ball Valves** - three 3-inch ball valves for easier loading and unloading
- **Insulated Valves** - wrapped with 220v heat tape and protected by insulated aluminum cover
- **Carbon Steel Tank** - 1/4" carbon steel tank construction
- **Insulating Blanket** - three-inch high-density foil-backed insulation with heat shield around entire tank keeps emulsion temperature even
- **Large Loader Hose** - fast loading with 10-foot long 3-inch diameter loader hose
- **Inspection Hatch** - interior inspection hatch on top side of system
- **Safety Cage** - safety cage on top of system
- **Ladder** - complete with safety cage on top of system\*
- **Access Port** - 24-inch round access port at base of system
- **Heavy-Duty Steel Stand** - provides sturdy tank support system
- **Outer Skin** - 3003 aluminum
- **Inspection Hatch** - interior inspection hatch on top side of system

## Optional System Features:

- **Stand Heights** - various stand heights available for special applications
- **Hose Swing Boom**

## System Sizes:

- **3000 Gallon** - insulated tank size 8'6" x 8'6"
- **4000 Gallon** - insulated tank size 8'6" x 11'3"
- **5000 Gallon** - insulated tank size 8'6" x 13'10"
- **6000 Gallon** - insulated tank size 8'6" x 16'4"
- **Lager Tanks** - available upon request

## Suggested System Foundation:

- **Foundation Construction** - completely flat concrete pad 12 feet square
- **Lag Plates** - flush with concrete; 1/2" thick steel; 14-inches square
- **For more information** - contact Total Patcher for suggested pad schematics

## Customer Responsibilities:

- **Site Prep** - site prep and pad construction
- **Electrical** - final electrical hook up of system
- **ADEM & EPA Requirements** - fulfillment of EPA & ADEM regulations



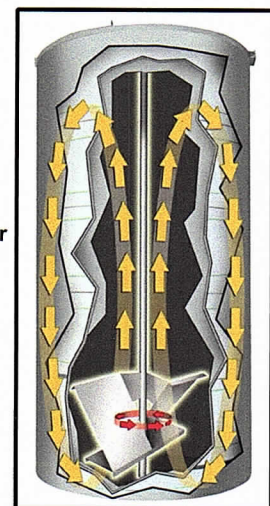
Heated & Insulated ball valves at the base of tank gravity feed emulsion to the Total Patcher.



Electrical control panel and agitator timer is enclosed within a single weatherproof NEMA 3r enclosure.



Optional hose swing boom



The agitator rotates, moving the emulsion evenly and gently throughout the tank. The heaters keep the emulsion at the proper temperature, ready for use

## Total Patcher

4614 East 1000 North  
Pittsboro, Indiana 46167

Toll Free 1-866-892-4737 Ph- 317-892-4737

Info@totalpatcher.com

www.totalpatcher.com